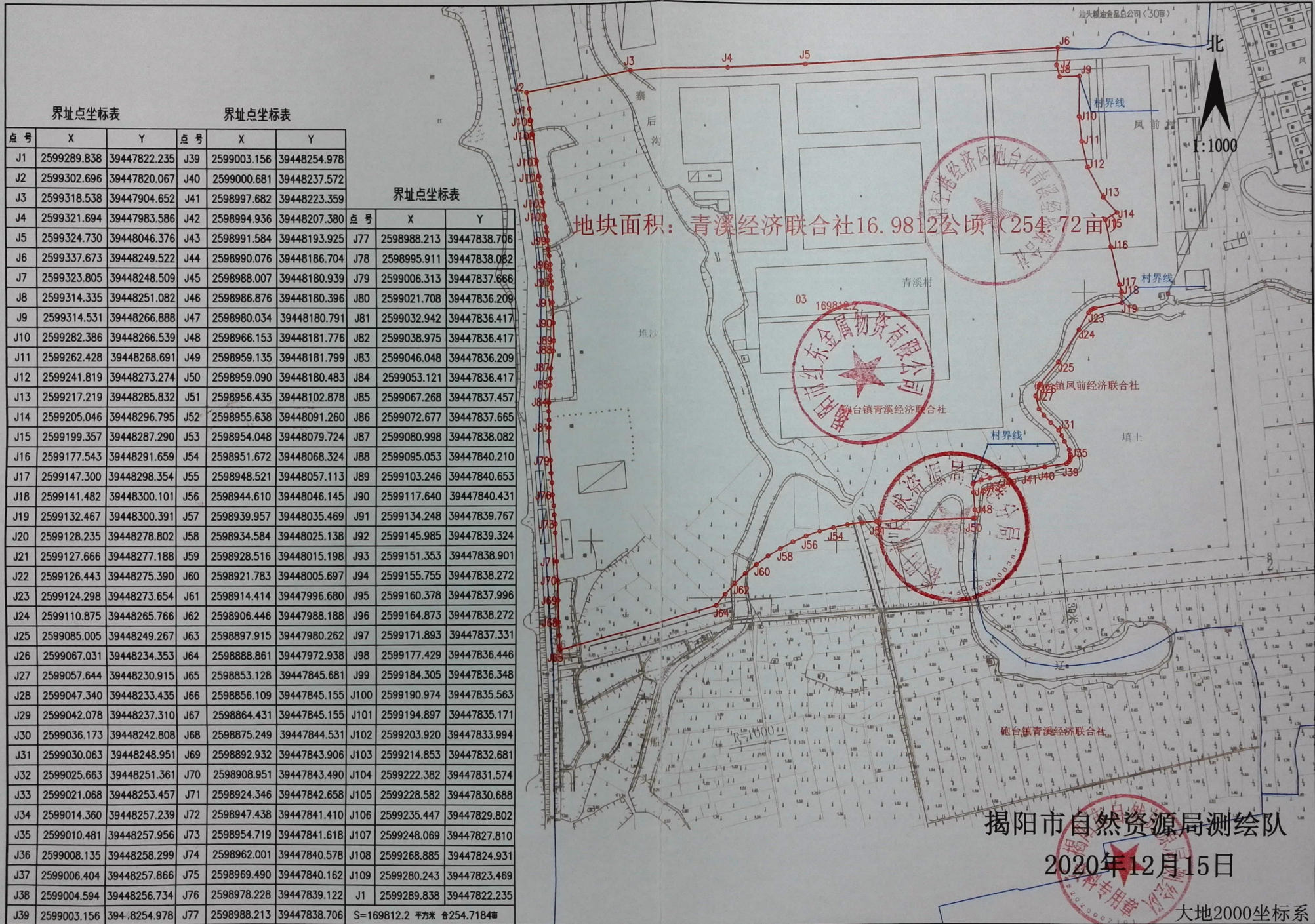


揭阳市红东金属物资有限公司"三旧"改造用地勘测定界图地块2

单位: m. m²



界址点坐标表			界址点坐标表		
点号	X	Y	点号	X	Y
J1	2599289.838	39447822.235	J39	2599003.156	39448254.978
J2	2599302.696	39447820.067	J40	2599000.681	39448237.572
J3	2599318.538	39447904.652	J41	2598997.682	39448223.359
J4	2599321.694	39447983.586	J42	2598994.936	39448207.380
J5	2599324.730	39448046.376	J43	2598991.584	39448193.925
J6	2599337.673	39448249.522	J44	2598990.076	39448186.704
J7	2599323.805	39448248.509	J45	2598988.007	39448180.939
J8	2599314.335	39448251.082	J46	2598986.876	39448180.396
J9	2599314.531	39448266.888	J47	2598980.034	39448180.791
J10	2599282.386	39448266.539	J48	2598966.153	39448181.776
J11	2599262.428	39448268.691	J49	2598959.135	39448181.799
J12	2599241.819	39448273.274	J50	2598959.090	39448180.483
J13	2599217.219	39448285.832	J51	2598956.435	39448102.878
J14	2599205.046	39448296.795	J52	2598955.638	39448091.260
J15	2599199.357	39448287.290	J53	2598954.048	39448079.724
J16	2599177.543	39448291.659	J54	2598951.672	39448068.324
J17	2599147.300	39448298.354	J55	2598948.521	39448057.113
J18	2599141.482	39448300.101	J56	2598944.610	39448046.145
J19	2599132.467	39448300.391	J57	2598939.957	39448035.469
J20	2599128.235	39448278.802	J58	2598934.584	39448025.138
J21	2599127.666	39448277.188	J59	2598928.516	39448015.198
J22	2599126.443	39448275.390	J60	2598921.783	39448005.697
J23	2599124.298	39448273.654	J61	2598914.414	39447996.680
J24	2599110.875	39448265.766	J62	2598906.446	39447988.188
J25	2599085.005	39448249.267	J63	2598897.915	39447980.262
J26	2599067.031	39448234.353	J64	2598888.861	39447972.938
J27	2599057.644	39448230.915	J65	2598853.128	39447845.681
J28	2599047.340	39448233.435	J66	2598856.109	39447845.155
J29	2599042.078	39448237.310	J67	2598864.431	39447845.155
J30	2599036.173	39448242.808	J68	2598875.249	39447844.531
J31	2599030.063	39448248.951	J69	2598892.932	39447843.906
J32	2599025.663	39448251.361	J70	2598908.951	39447843.490
J33	2599021.068	39448253.457	J71	2598924.346	39447842.658
J34	2599014.360	39448257.239	J72	2598947.438	39447841.410
J35	2599010.481	39448257.956	J73	2598954.719	39447841.618
J36	2599008.135	39448258.299	J74	2598962.001	39447840.578
J37	2599006.404	39448257.866	J75	2598969.490	39447840.162
J38	2599004.594	39448256.734	J76	2598978.228	39447839.122
J39	2599003.156	39448254.978	J77	2598988.213	39447838.706

S=169812.2 平方米 合254.7184亩